

QUIZ

WHAT IS YOUR DIAGNOSIS?

A 71-year-old man was admitted to the Department of Urology with a scrotal nodule attached to the spermatic cord. Grossly, a well-circumscribed, solid grey tumour of 4 cm × 3.5 cm × 3 cm was identified. The microscopic image is presented in Fig. 1 (A-B).

The immunohistochemical staining revealed: CD34 (+), desmin (+/-), S100 (-), SMA (-), HHF35 (-), Ki-67 (10%). What is your diagnosis?

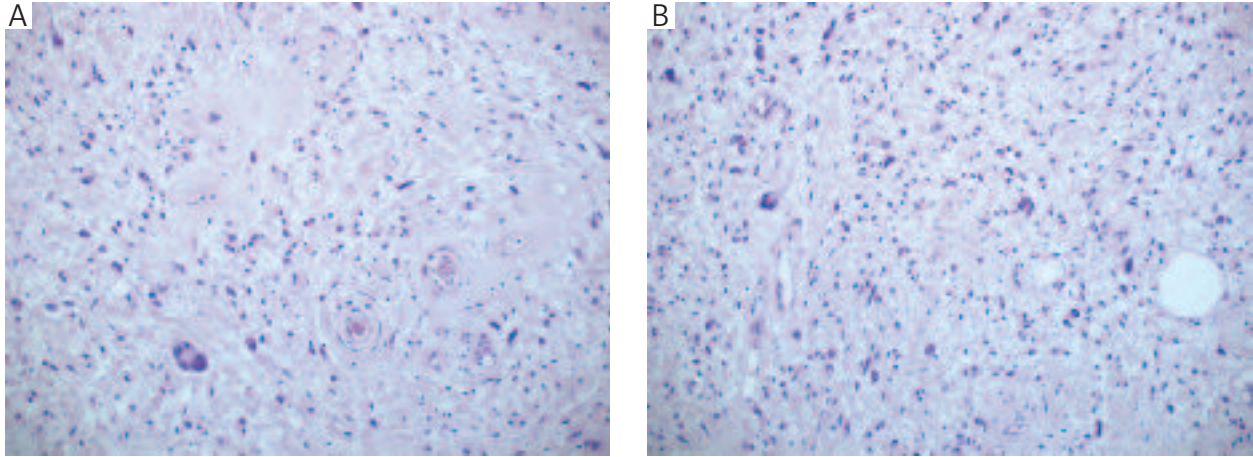


Fig. 1

Konrad Praczyński¹, Anna Szumera-Ciećkiewicz²

¹Department of Pathology, Medical Centre for Postgraduate Education, Warsaw, Poland

²Department of Diagnostic Hematology, Institute of Hematology and Transfusion Medicine, Warsaw, Poland

Answers should be sent to the Editorial Office by 31.08.2012. The correct answer will be announced in the next issue of the *Polish Journal of Pathology*. All participants with the highest number of correct answers to the quizzes published in vol. 63 (4 issues) will be entered into the prize draw for a book.