

## QUIZ

### WHAT IS YOUR DIAGNOSIS?

An 81-year-old man was admitted to the Hematology Department with symptoms of fatigue, loss of weight of about 10 kg in 3 months, and severe night sweats. The clinical examination revealed painless cervical and supraclavicular lymph node enlargement. Computed tomography of the chest showed only minor fibrotic changes in the lung parenchyma. The main results of laboratory tests were: WBC 8.84 G/l, neutrophils 7.4 G/l, lymphocytes 0.62 G/l, HGB 9.0 g/dl,

PTL 370 G/l, sedimentation rate 110 mm/h. The past medical history was not significant.

The histopathological examination included evaluation of the right cervical lymph node.

Microscopic images of routine HE staining are shown (magnification depicted in Fig. 1A-D). The differential diagnosis required histo- and immunohistochemical panels.

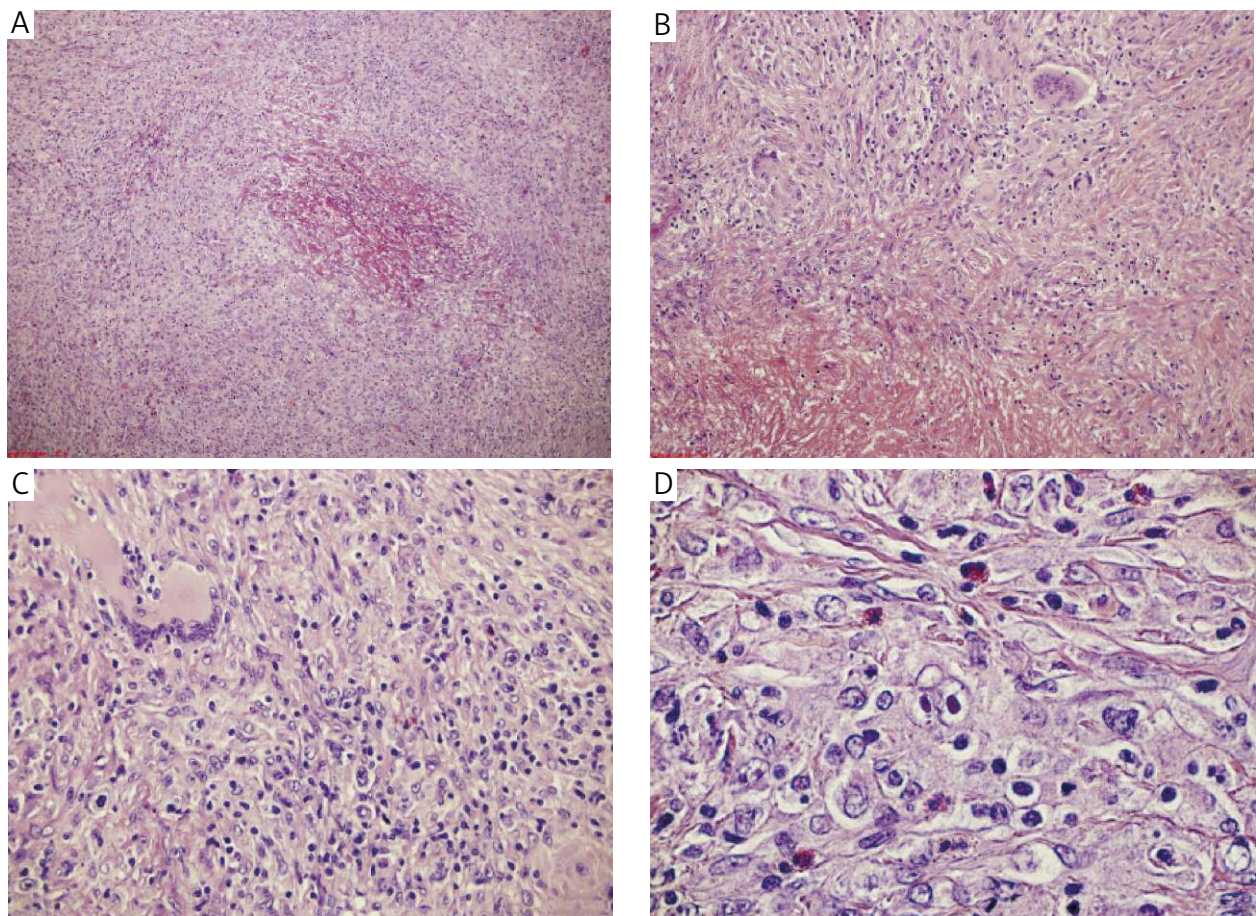


Fig. 1A-D. Microscopic examination of enlarged lymph node

Anna Szumera-Ciećkiewicz<sup>1</sup>, Monika Prochorec-Sobieszek<sup>1</sup>, Ewa Lech-Marańda<sup>2</sup>

<sup>1</sup>Department of Diagnostic Hematology, Institute of Hematology and Transfusion Medicine, Warsaw

<sup>2</sup>Department of Hematology, Institute of Hematology and Transfusion Medicine, Warsaw

Answers should be sent to the Editorial Office by 28.02.2014. The correct answer will be announced in the next issue of the *Polish Journal of Pathology*. All participants with the highest number of correct answers to the quizzes published in vol. 64 (4 issues) will be entered into the prize draw for a book.