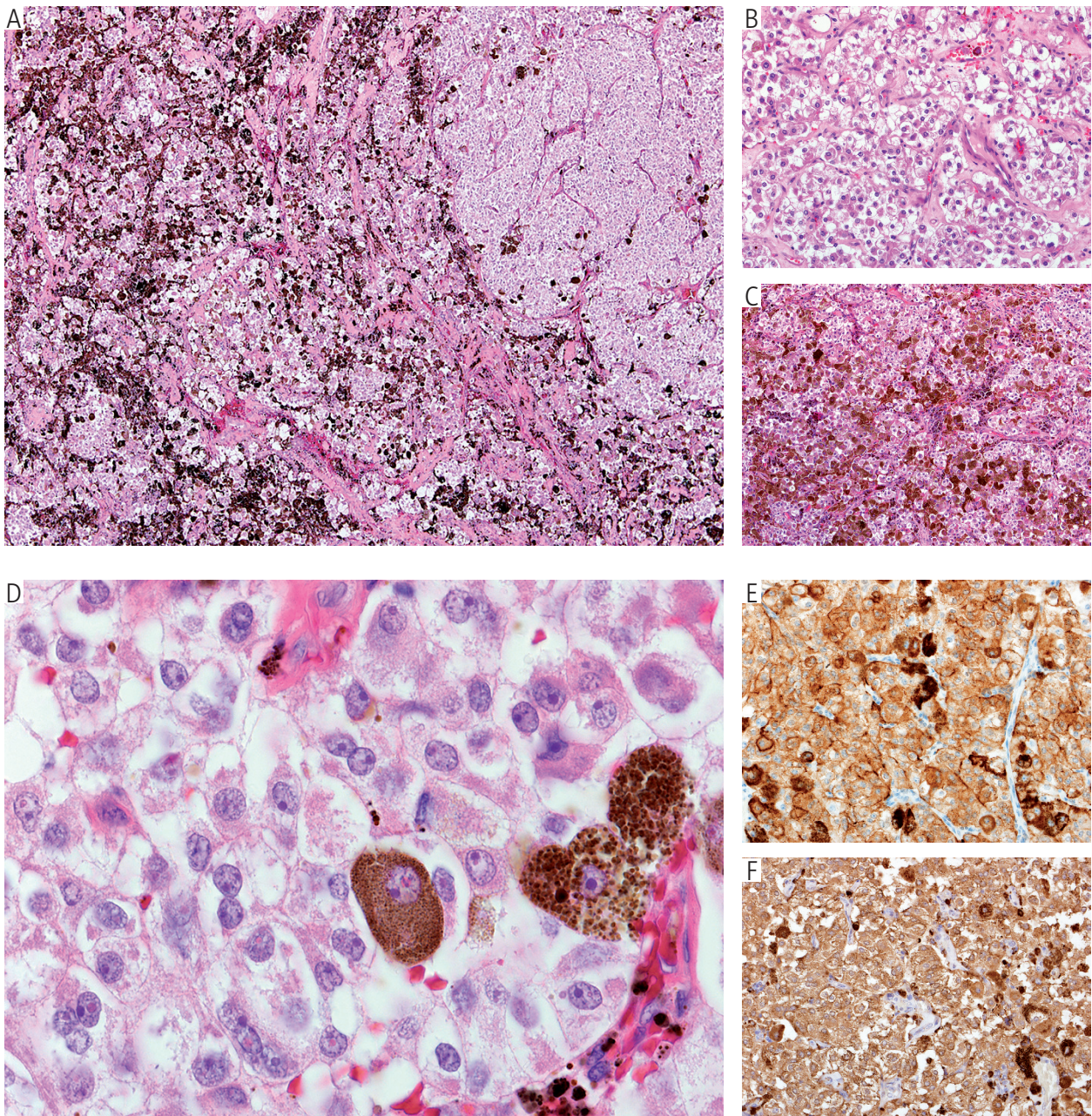


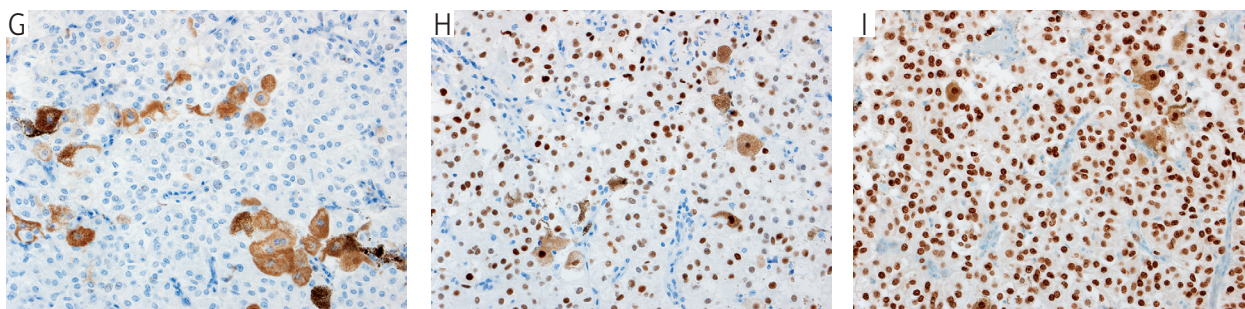
Quiz

WHAT IS YOUR DIAGNOSIS?

A 61-year-old female after initial exploratory laparotomy with partial tumor resection was admitted to Maria Skłodowska-Curie Institute-Oncology Cancer Center for clinical and pathological consultation. The tumor mass of the 10 cm diameter was located in the iliac fossa region and was attached to large vessels. The intraperitoneal dissemination and

lymph node metastases were found. Histopathological and immunohistochemical findings are depicted in Figure 1: A – HE (40×), B – HE (100×), C – HE (40×), D – HE (600×), E – HMB-45 (200×), F – Cathepsin K (200×), G – PAX8 (200×), H – progesteron receptor (200×), I – TFE3 (200×).





Anna Szumera-Ciećkiewicz^{1,2}, Olga Kuczkiewicz-Siemion^{1,2}, Piotr Rutkowski³

¹Department of Pathology and Laboratory Diagnostics, Maria Skłodowska-Curie Institute – Oncology Center, Warsaw, Poland

²Department of Diagnostic Hematology, Institute of Hematology and Transfusion Medicine, Warsaw, Poland

³Department of Soft Tissue/Bone Sarcoma and Melanoma, Maria Skłodowska-Curie Institute-Oncology Center, Warsaw, Poland

Answers should be sent to the Editorial Office until 31.12.2019. The correct answer will be announced in the next issue of the *Polish Journal of Pathology*.