

Quiz

WHAT IS YOUR DIAGNOSIS?

We present an endometrial tumor of a 55-year-old patient with a complaint of postmenopausal bleeding.

On macroscopic examination, a solitary tumoral lesion measuring 35 × 35 mm, infiltrating the outer 1/2 of the myometrium, with a hemorrhagic cross-sectional surface was observed (Fig. 1).

Histologically, a high-grade tumoral lesion with epithelioid morphology was observed. The tumor consisted of large epithelioid and polygonal cells forming solid structures. Hemorrhage, nuclear atypia, frequent mitosis, and occasional anastomosing vascular structures were observed (Figs. 2, 3).



Fig. 1.

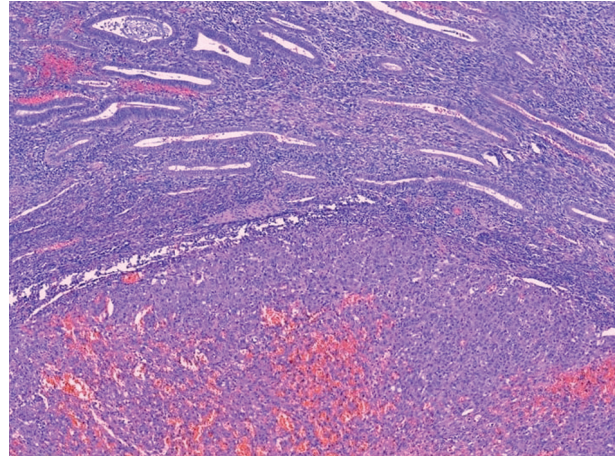


Fig. 2.

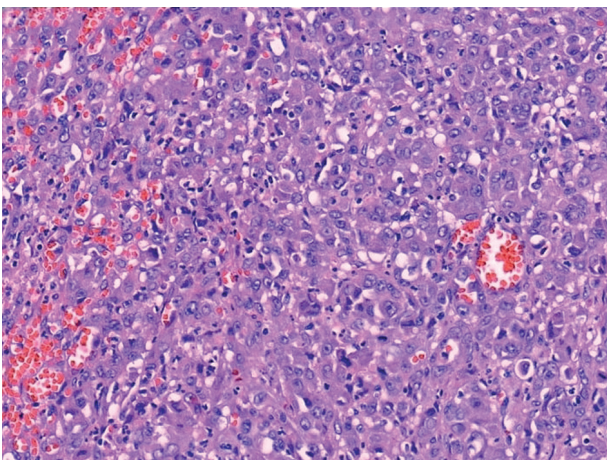


Fig. 3.

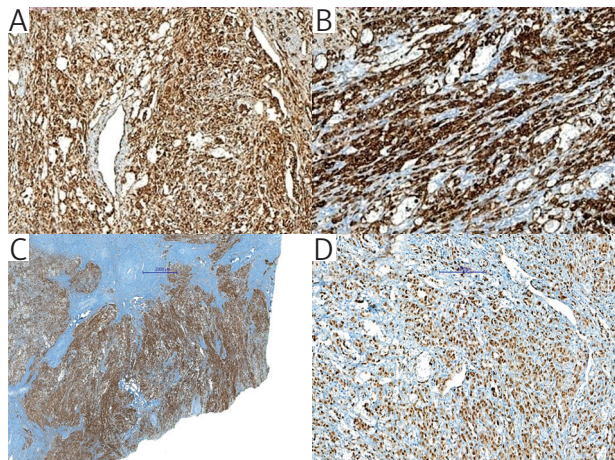


Fig. 4.

Selim Sevim, Ekin Gedik, Hilal Ozakinci, Gulsah Kaygusuz, Duygu Enneli
Department of Pathology, Ankara University Medical School, Ankara, Turkey

Tumoral cells were diffuse positive for vimentin (Fig. 4A), HMW + LMW-CK (Fig. 4B), CD31 (Fig. 4C), and ERG (Fig. 4D).

Answers should be sent to the Editorial Office until 29th June 2023. The correct answer will be announced in the next issue of the *Polish Journal of Pathology*.